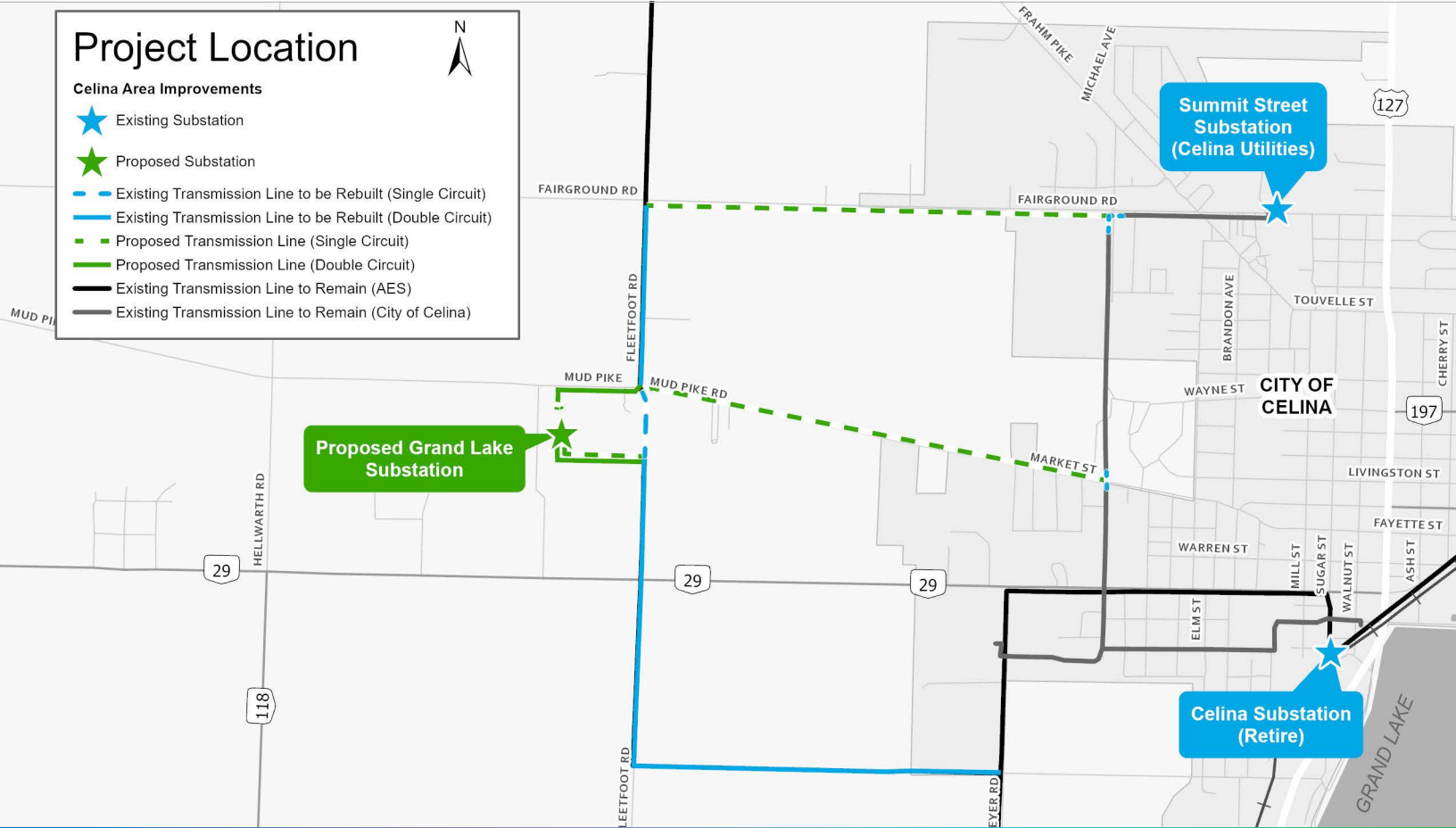


Celina Area Improvements

AES Ohio is investing in the electric transmission system to help improve reliability and operational flexibility for all customers in and around the City of Celina in Mercer County, Ohio. The improvement project involves building approximately 3 miles of new transmission lines, rebuilding 2.5 miles of existing transmission lines, retirement of the existing Celina Substation, and the addition of a new Grand Lake Substation.



What

The project includes:

- Building 2.5 miles of new 69kV single circuit transmission line
- Building 0.3 miles of new double circuit 69kV transmission line
- Rebuilding 2.5 miles of double circuit 69kV transmission line
- New Grand Lake 69kV Substation

Why

AES Ohio is committed to safe reliable service for new and existing customers, and upgrades are necessary to strengthen the electric transmission system. The Project is supplemental to a wider area improvement initiative which includes the reconfiguration of the existing 69kV transmission lines to better serve the City of Celina's residents by increasing capacity and reliability in the area. The proposed lines will provide redundancy so that if an outage occurs on one line, the other will remain in-service. These enhancements will allow greater flexibility to take system maintenance outages and improve service and reliability to the customers in the area.

Where

- Mercer County
- City of Celina
- Jefferson Township

Celina Area Improvements

Schedule*

2022

2023

2024

2025

Planning/Siting

Spring of 2022 - Spring of 2023



Project Announcement

Summer of 2023



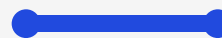
Field Surveys and Engineering

Spring of 2023 - End of 2023



Right-of-Way (ROW) Communications

Winter of 2022 - Fall of 2023



Facility Construction

Summer of 2024 - Fall of 2025



In Service

Fall of 2025



ROW Restoration

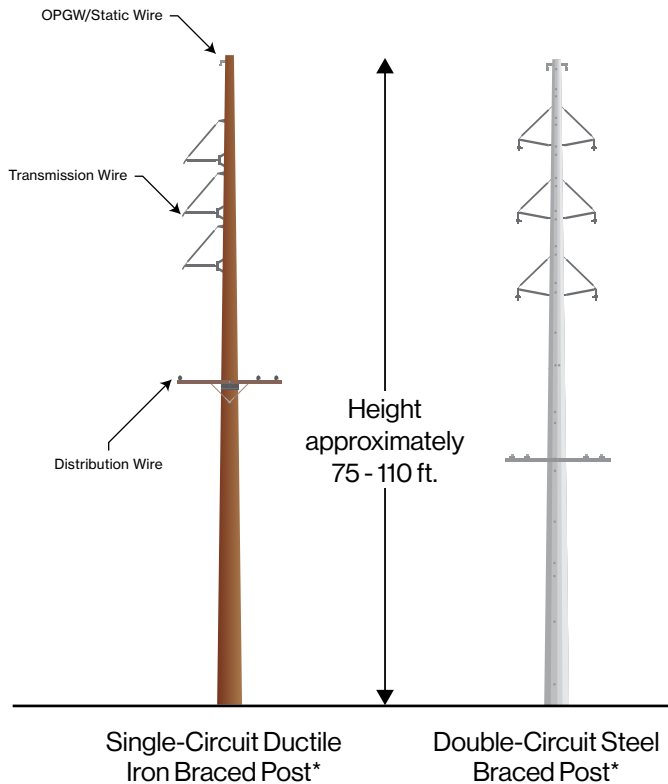
Fall of 2025



*Schedule is preliminary and subject to change.

Typical Structures

The project involves the use of both steel and ductile iron poles, with heights ranging from approximately 75 - 110 feet, with an approximate ROW easement width of 25 - 75 feet.



Where Can I Get More Information?

Visit the Celina Area Improvements project website:
aes-ohio.com/celina-area-improvements



AES Ohio values your input. Please use the phone number or email below if you have any questions or concerns.

(937) 331-4314

aesohiotransmissionmaintenancegroup@aes.com

Company Overview

- Serving 527,000 customers across 24 counties
- Approximately 18,000 miles of transmission, distribution and underground lines
- 6,000 square mile service territory
- Employing more than 700 people

AES Ohio invests in our equipment and technology to create a stronger, safer and more efficient electrical system. We know our customers depend on us to provide the electricity they need to power their lives.

*Final structure height, structure type, and ROW easement width may vary.