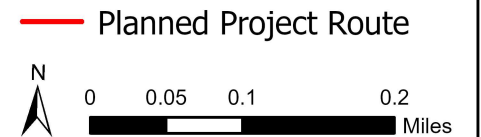




Earthstar Technologies, Esri Community Maps Contributors, © OpenStreetMap, Microsoft, Esri, HERE, Garmin, SafeGraph, GeoTechnologies, Inc, METI/NASA, USGS, EPA, NPS, US Census Bureau, USDA, Maxar



Amsterdam-West Moulton 138kV Improvements Project Route

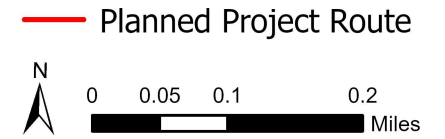




Earthstar Geographics, Esri Community Maps Contributors, OpenStreetMap, Microsoft, Esri, Garmin, GeoEye, AeroMap, IGN, METI/NASA, USGS, EPA, NPS, US Census Bureau, USDA



Amsterdam-West Moulton 138kV Improvements Project Route

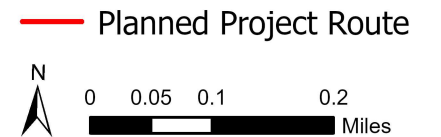


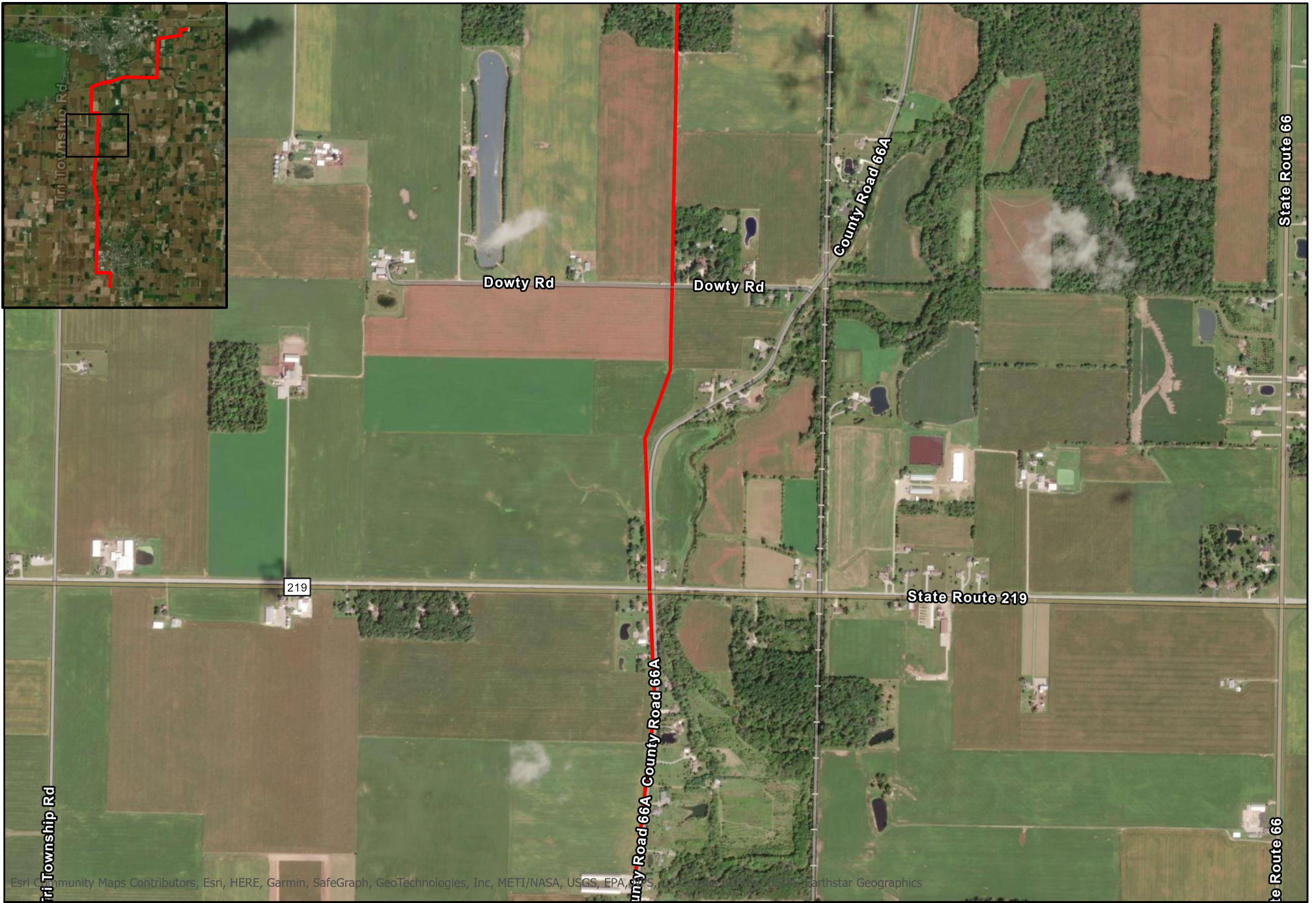


Esri Community Maps Contributors, Esri, HERE, Garmin, SafeGraph, GeoTechnologies, Inc., HERE/USA, USGS, EPA, NPS, US Census Bureau, NOAA, Earthstar Geographics



Amsterdam-West Moulton 138kV Improvements Project Route

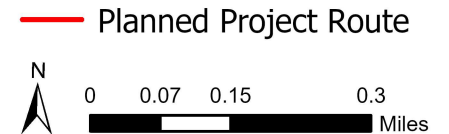


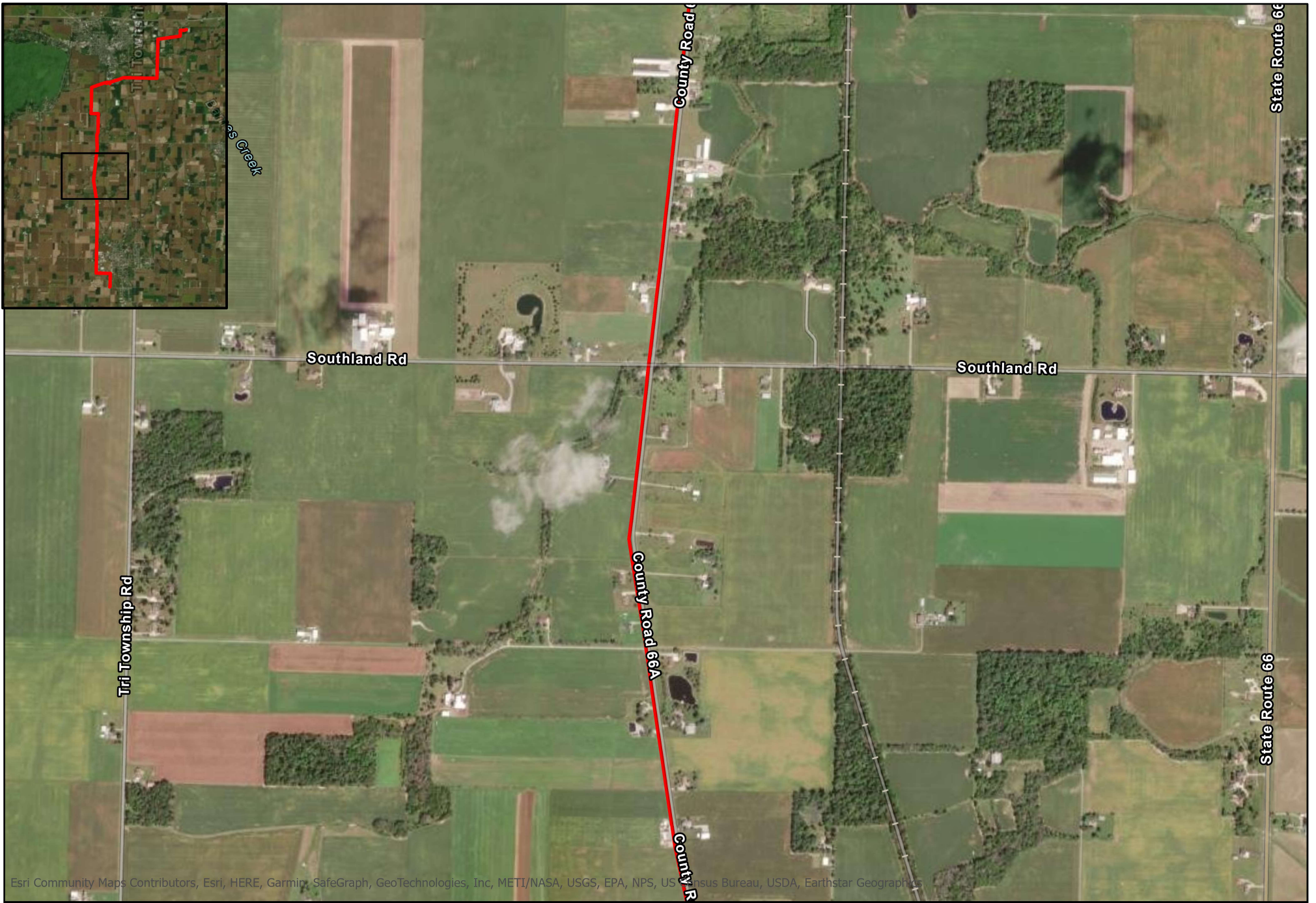


Esri, Community Maps Contributors, Esri, HERE, Garmin, SafeGraph, GeoTechnologies, Inc, METI/NASA, USGS, EPA, NPS, US Census Bureau, Swire, Earthstar Geographics



Amsterdam-West Moulton 138kV Improvements Project Route

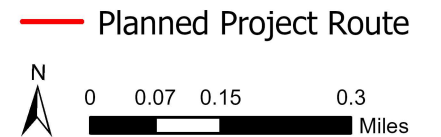


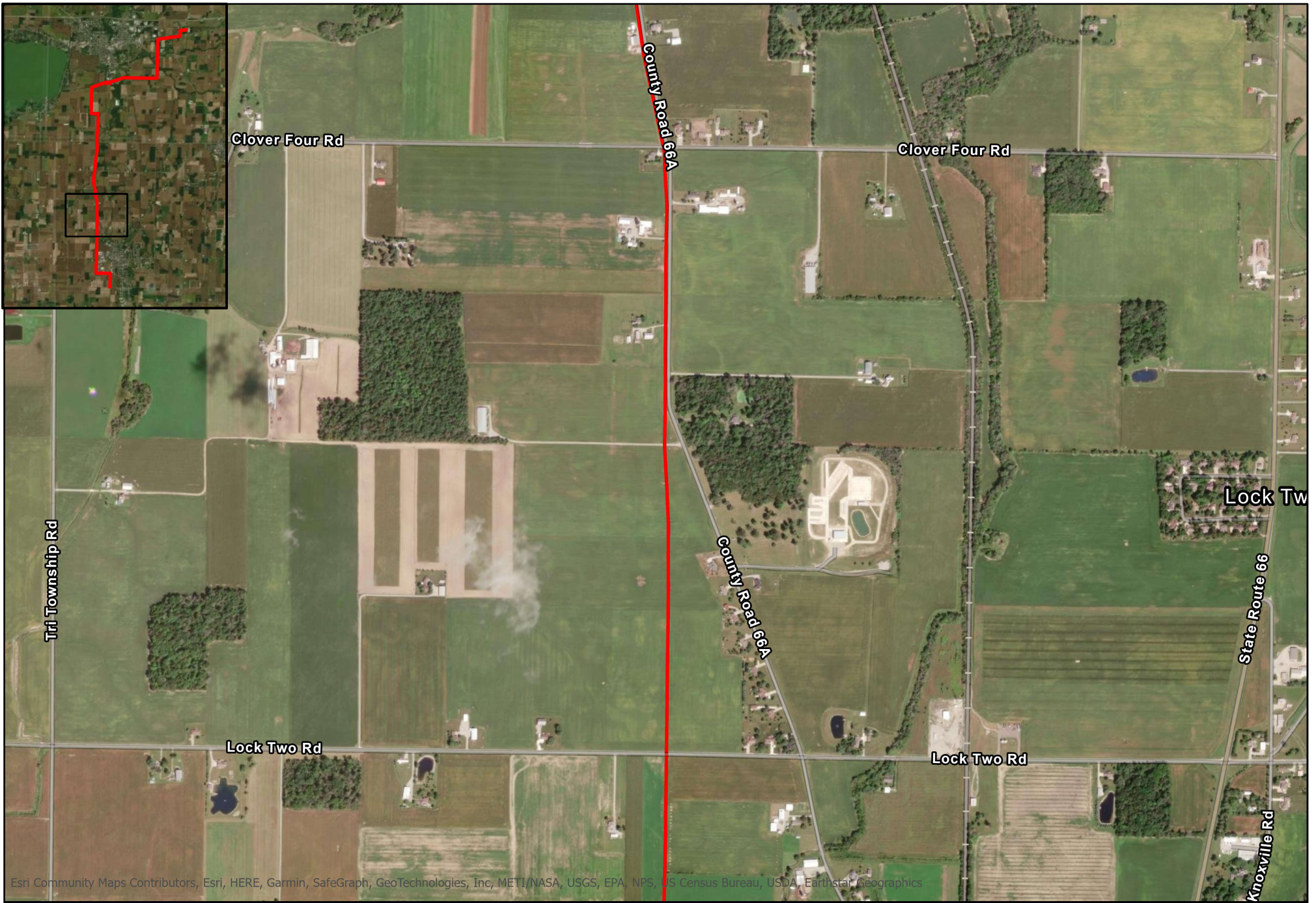


Esri Community Maps Contributors, Esri, HERE, Garmin, SafeGraph, GeoTechnologies, Inc, METI/NASA, USGS, EPA, NPS, US Census Bureau, USDA, Earthstar Geographics



Amsterdam-West Moulton 138kV Improvements Project Route

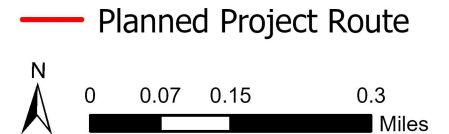


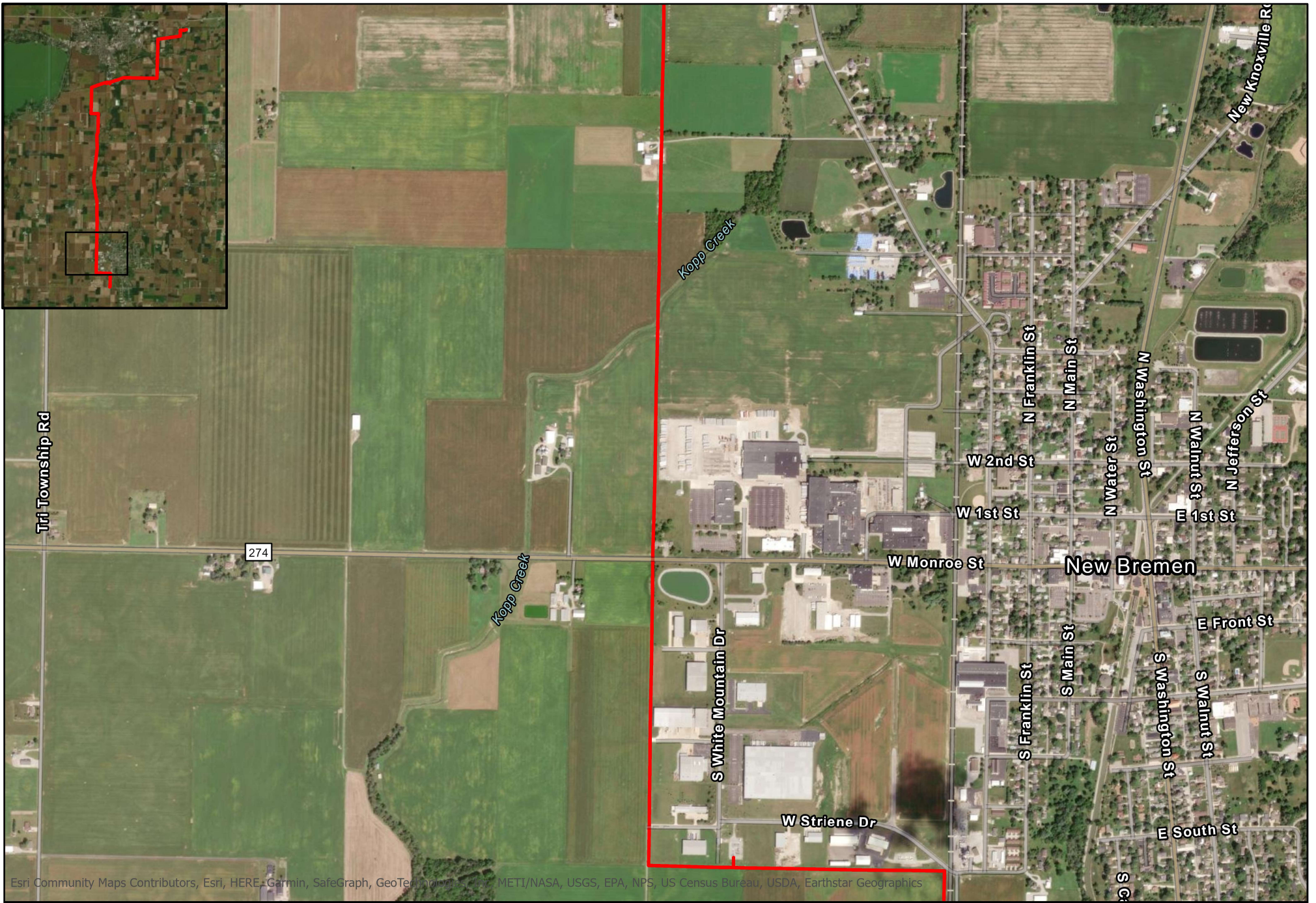


Esri Community Maps Contributors, Esri, HERE, Garmin, SafeGraph, GeoTechnologies, Inc, METI/NASA, USGS, EPA, NPS, US Census Bureau, USDA, Earthstar, Geographics



Amsterdam-West Moulton 138kV Improvements Project Route

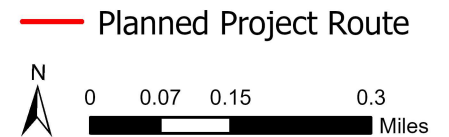


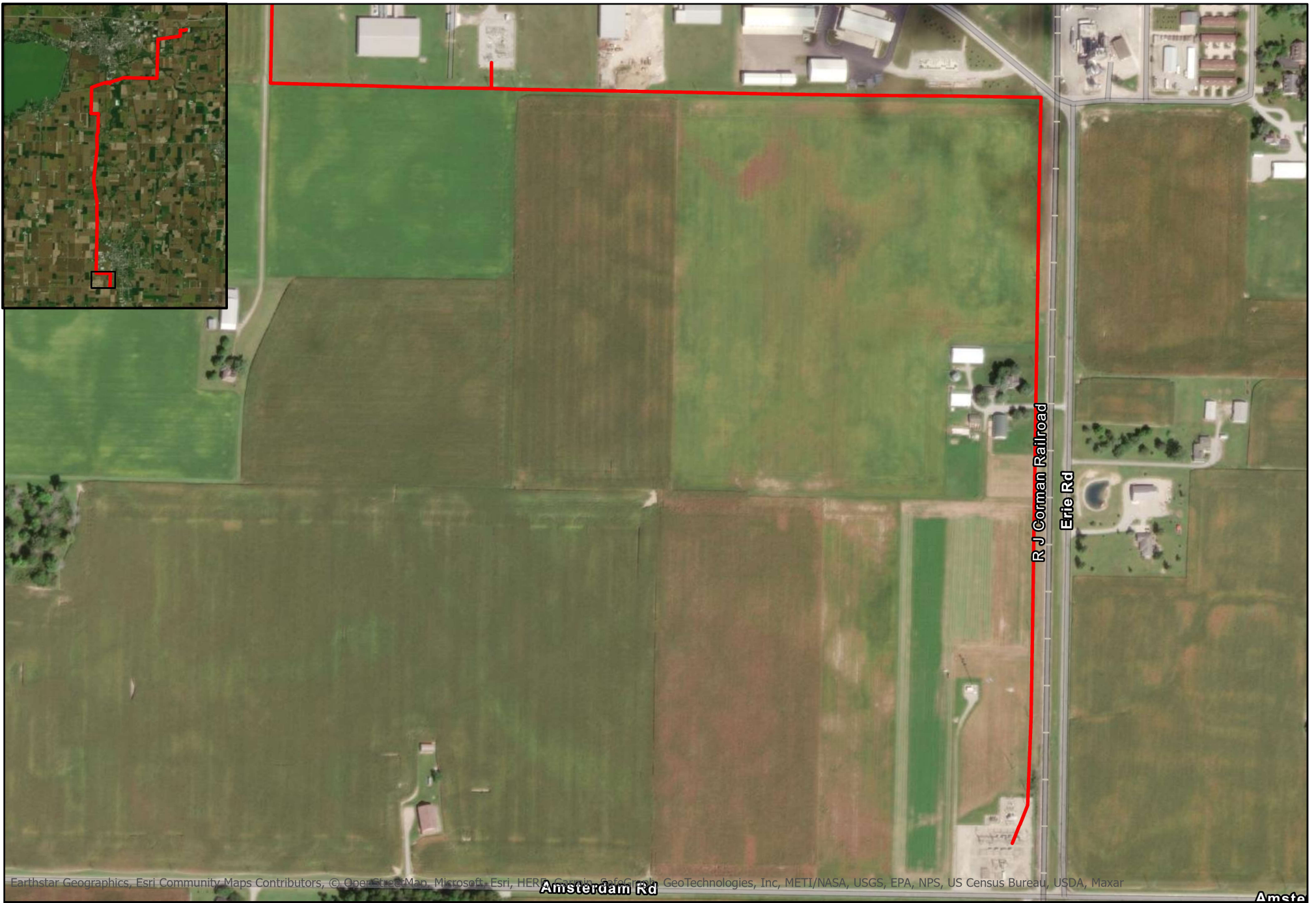


Esri Community Maps Contributors, Esri, HERE, Garmin, SafeGraph, GeoTechnology, METI/NASA, USGS, EPA, NPS, US Census Bureau, USDA, Earthstar Geographics



Amsterdam-West Moulton 138kV Improvements Project Route





Earthstar Geographics, Esri Community Maps Contributors, © OpenStreetMap, Microsoft, Esri, HERE, Garmin, Swire, GeoTechnologies, Inc, METI/NASA, USGS, EPA, NPS, US Census Bureau, USDA, Maxar



Amsterdam-West Moulton 138kV Improvements Project Route

