

## Environmental Disclosure Information

### Dayton Power & Light

#### Projected Data for the 2014 Calendar Year

<p><b>Generation Resource Mix -</b></p> <p>A comparison between the sources of generation used to produce this product and the historic regional average supply mix.</p>	<p><b>Supplier's Product</b></p>	<p><b>Regional</b></p>																				
<p><b>Environmental Characteristics -</b></p> <p>A description of the characteristics associated with each possible generation resource.</p>	<table border="1" style="width: 100%; border-collapse: collapse;"> <tr> <td style="width: 33%;">Biomass Power</td> <td style="width: 33%;">Air Emissions and Solid Waste</td> </tr> <tr> <td>Coal Power</td> <td>Air Emissions and Solid Waste</td> </tr> <tr> <td>Hydro Power</td> <td>Wildlife Impacts</td> </tr> <tr> <td>Natural Gas Power</td> <td>Air Emissions and Solid Waste</td> </tr> <tr> <td>Nuclear Power</td> <td>Radioactive Waste</td> </tr> <tr> <td>Oil Power</td> <td>Air Emissions and Solid Waste</td> </tr> <tr> <td>Other Sources</td> <td>Unknown Impacts</td> </tr> <tr> <td>Solar Power</td> <td>No Significant Impacts</td> </tr> <tr> <td>Unknown Purchased Resources</td> <td>Unknown Impacts</td> </tr> <tr> <td>Wind Power</td> <td>Wildlife Impacts</td> </tr> </table>		Biomass Power	Air Emissions and Solid Waste	Coal Power	Air Emissions and Solid Waste	Hydro Power	Wildlife Impacts	Natural Gas Power	Air Emissions and Solid Waste	Nuclear Power	Radioactive Waste	Oil Power	Air Emissions and Solid Waste	Other Sources	Unknown Impacts	Solar Power	No Significant Impacts	Unknown Purchased Resources	Unknown Impacts	Wind Power	Wildlife Impacts
Biomass Power	Air Emissions and Solid Waste																					
Coal Power	Air Emissions and Solid Waste																					
Hydro Power	Wildlife Impacts																					
Natural Gas Power	Air Emissions and Solid Waste																					
Nuclear Power	Radioactive Waste																					
Oil Power	Air Emissions and Solid Waste																					
Other Sources	Unknown Impacts																					
Solar Power	No Significant Impacts																					
Unknown Purchased Resources	Unknown Impacts																					
Wind Power	Wildlife Impacts																					
<p><b>Air Emissions -</b></p> <p>A comparison between the air emissions related to this product and the regional average air emissions.</p>	<table style="width: 100%; border-collapse: collapse;"> <tr> <td style="width: 30%;">Carbon dioxide</td> <td style="width: 60%;"></td> </tr> <tr> <td>Nitrogen oxide</td> <td></td> </tr> <tr> <td>Sulfur dioxide</td> <td></td> </tr> </table> <p style="text-align: right;">■ Projected</p> <p style="text-align: center;">Regional Average</p>		Carbon dioxide		Nitrogen oxide		Sulfur dioxide															
Carbon dioxide																						
Nitrogen oxide																						
Sulfur dioxide																						
<p><b>Radioactive Waste -</b></p> <p>Radioactive waste associated with the product.</p>	<table border="1" style="width: 100%; border-collapse: collapse;"> <thead> <tr> <th style="width: 60%;">Type:</th> <th style="width: 40%;">Quantity:</th> </tr> </thead> <tbody> <tr> <td>High-Level Radioactive Waste</td> <td>Lbs./1,000 kWh</td> </tr> <tr> <td>Low-Level Radioactive Waste</td> <td>Ft<sup>3</sup>/1,000 kWh</td> </tr> </tbody> </table> <p style="font-size: small;">Note: The generation of this product involves the use of 6% of unknown purchased resources. The air emissions and radioactive waste associated with these unknown resources are not included in these charts.</p>		Type:	Quantity:	High-Level Radioactive Waste	Lbs./1,000 kWh	Low-Level Radioactive Waste	Ft <sup>3</sup> /1,000 kWh														
Type:	Quantity:																					
High-Level Radioactive Waste	Lbs./1,000 kWh																					
Low-Level Radioactive Waste	Ft <sup>3</sup> /1,000 kWh																					
<p>With in-depth analysis, the environmental characteristics of any form of electric generation will reveal benefits as well as costs. For further information, contact Dayton Power &amp; Light at <a href="http://www.dpandl.com">www.dpandl.com</a> or by phone at 800-433-8500.</p>																						

*DP&L's practice is to meet or exceed all environmental regulations.*

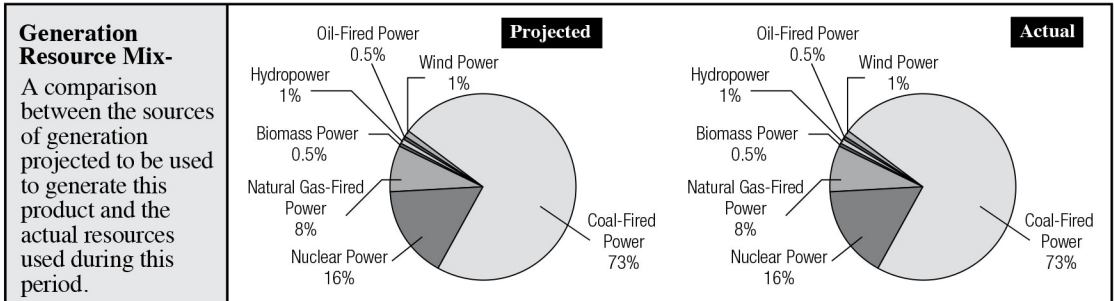
Regional Average Air Emission rates: sulfur dioxide-5.2 Lbs/MWh, nitrogen oxide-1.5 Lbs/MWh, carbon dioxide-1,635 Lbs/MWh

# Environmental Disclosure - Quarterly Comparisons

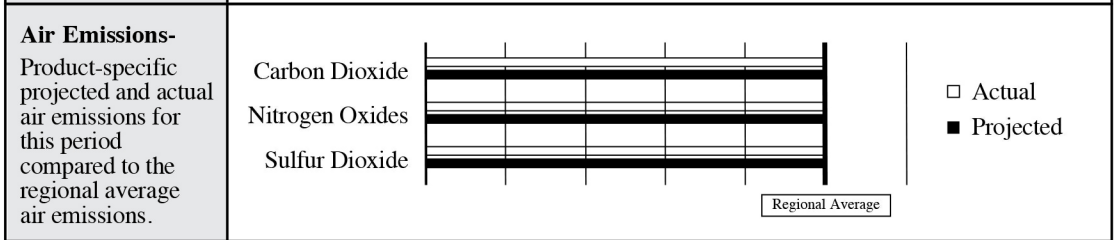
Dayton Power & Light

Projected Data for Calendar Year 2013

Actual Data for the Period 01/01/13 to 12/31/13



<p><b>Environmental Characteristics-</b> A description of the characteristics associated with each possible generation resource.</p>	<table border="1" style="width: 100%; border-collapse: collapse;"> <tr><td>Biomass Power</td><td>Air Emissions and Solid Waste</td></tr> <tr><td>Coal Power</td><td>Air Emissions and Solid Waste</td></tr> <tr><td>Hydro Power</td><td>Wildlife Impacts</td></tr> <tr><td>Natural Gas Power</td><td>Air Emissions and Solid Waste</td></tr> <tr><td>Nuclear Power</td><td>Radioactive Waste</td></tr> <tr><td>Oil Power</td><td>Air Emissions and Solid Waste</td></tr> <tr><td>Other Sources</td><td>Unknown Impacts</td></tr> <tr><td>Solar Power</td><td>No Significant Impacts</td></tr> <tr><td>Unknown Purchased Resources</td><td>Unknown Impacts</td></tr> <tr><td>Wind Power</td><td>Wildlife Impacts</td></tr> </table>	Biomass Power	Air Emissions and Solid Waste	Coal Power	Air Emissions and Solid Waste	Hydro Power	Wildlife Impacts	Natural Gas Power	Air Emissions and Solid Waste	Nuclear Power	Radioactive Waste	Oil Power	Air Emissions and Solid Waste	Other Sources	Unknown Impacts	Solar Power	No Significant Impacts	Unknown Purchased Resources	Unknown Impacts	Wind Power	Wildlife Impacts
Biomass Power	Air Emissions and Solid Waste																				
Coal Power	Air Emissions and Solid Waste																				
Hydro Power	Wildlife Impacts																				
Natural Gas Power	Air Emissions and Solid Waste																				
Nuclear Power	Radioactive Waste																				
Oil Power	Air Emissions and Solid Waste																				
Other Sources	Unknown Impacts																				
Solar Power	No Significant Impacts																				
Unknown Purchased Resources	Unknown Impacts																				
Wind Power	Wildlife Impacts																				



<p><b>Radioactive Waste-</b> Radioactive waste associated with the product.</p>	<table border="1" style="width: 100%; border-collapse: collapse;"> <thead> <tr> <th style="width: 50%;">Type:</th> <th colspan="2" style="width: 50%;">Quantity:</th> </tr> </thead> <tbody> <tr> <td>High-Level Radioactive Waste</td> <td style="text-align: center;">0</td> <td style="text-align: center;">Lbs/1,000 kWh</td> </tr> <tr> <td>Low-Level Radioactive Waste</td> <td style="text-align: center;">0</td> <td style="text-align: center;">Ft<sup>3</sup> /1,000 kWh</td> </tr> </tbody> </table> <p style="font-size: small; margin-top: 5px;">Note: The generation of this product involves the use of 0% of unknown purchased resources. The air emissions and radioactive waste associated with these unknown resources are not included in these charts.</p>	Type:	Quantity:		High-Level Radioactive Waste	0	Lbs/1,000 kWh	Low-Level Radioactive Waste	0	Ft <sup>3</sup> /1,000 kWh
Type:	Quantity:									
High-Level Radioactive Waste	0	Lbs/1,000 kWh								
Low-Level Radioactive Waste	0	Ft <sup>3</sup> /1,000 kWh								

With in-depth analysis, the environmental characteristics of any form of electric generation will reveal benefits as well as costs. For further information, contact Dayton Power and Light at [www.dpandl.com](http://www.dpandl.com) or by phone at 800-433-8500.

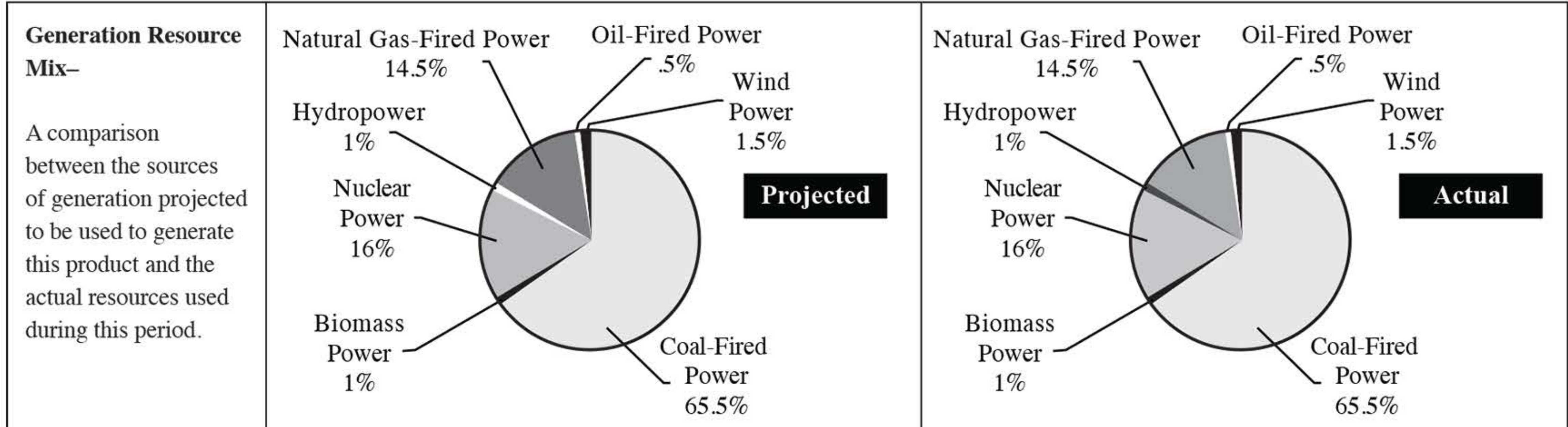
*DP&L's practice is to meet or exceed all environmental regulations.*  
Regional Average Air Emission rates: sulfur dioxide-5.6 Lbs/MWh, nitrogen oxides-1.7 Lbs/MWh, carbon dioxide-1.685 Lbs/MWh



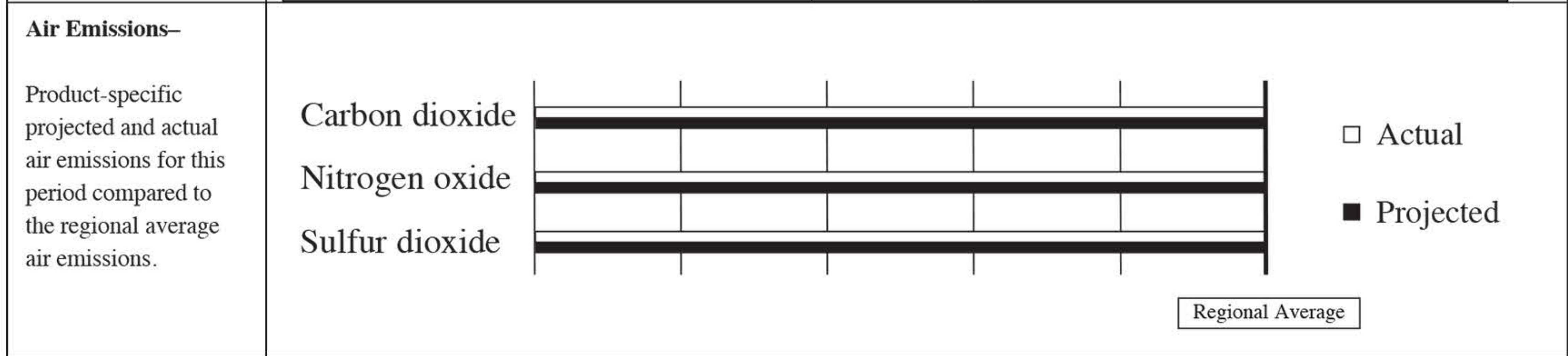
# Environmental Disclosure Information • Quarterly Comparisons

Dayton Power & Light • Projected Data for Calendar Year 2014

Actual Data for Period 01/01/14 to 3/31/14



<p><b>Environmental Characteristics–</b></p> <p>A description of the characteristics associated with each possible generation resource.</p>	<table border="1" style="width: 100%; border-collapse: collapse;"> <tr><td>Biomass Power</td><td>Air Emissions and Solid Waste</td></tr> <tr><td>Coal Power</td><td>Air Emissions and Solid Waste</td></tr> <tr><td>Hydro Power</td><td>Wildlife Impacts</td></tr> <tr><td>Natural Gas Power</td><td>Air Emissions and Solid Waste</td></tr> <tr><td>Nuclear Power</td><td>Radioactive Waste</td></tr> <tr><td>Oil Power</td><td>Air Emissions and Solid Waste</td></tr> <tr><td>Other Sources</td><td>Unknown Impacts</td></tr> <tr><td>Solar Power</td><td>No Significant Impacts</td></tr> <tr><td>Unknown Purchased Resources</td><td>Unknown Impacts</td></tr> <tr><td>Wind Power</td><td>Wildlife Impacts</td></tr> </table>	Biomass Power	Air Emissions and Solid Waste	Coal Power	Air Emissions and Solid Waste	Hydro Power	Wildlife Impacts	Natural Gas Power	Air Emissions and Solid Waste	Nuclear Power	Radioactive Waste	Oil Power	Air Emissions and Solid Waste	Other Sources	Unknown Impacts	Solar Power	No Significant Impacts	Unknown Purchased Resources	Unknown Impacts	Wind Power	Wildlife Impacts	
Biomass Power	Air Emissions and Solid Waste																					
Coal Power	Air Emissions and Solid Waste																					
Hydro Power	Wildlife Impacts																					
Natural Gas Power	Air Emissions and Solid Waste																					
Nuclear Power	Radioactive Waste																					
Oil Power	Air Emissions and Solid Waste																					
Other Sources	Unknown Impacts																					
Solar Power	No Significant Impacts																					
Unknown Purchased Resources	Unknown Impacts																					
Wind Power	Wildlife Impacts																					



<p><b>Radioactive Waste–</b></p> <p>Radioactive waste associated with the product.</p>	<table border="1" style="width: 100%; border-collapse: collapse;"> <thead> <tr> <th style="width: 60%;">Type:</th> <th style="width: 40%;">Quantity:</th> </tr> </thead> <tbody> <tr> <td>High-Level Radioactive Waste</td> <td>Lbs./1,000 kWh</td> </tr> <tr> <td>Low-Level Radioactive Waste</td> <td>Ft<sup>3</sup>/1,000 kWh</td> </tr> </tbody> </table> <p style="font-size: small; margin-top: 5px;">Note: The generation of this product involves the use of 0% of unknown purchased resources. The air emissions and radioactive waste associated with these unknown resources are not included in these charts.</p>	Type:	Quantity:	High-Level Radioactive Waste	Lbs./1,000 kWh	Low-Level Radioactive Waste	Ft <sup>3</sup> /1,000 kWh
Type:	Quantity:						
High-Level Radioactive Waste	Lbs./1,000 kWh						
Low-Level Radioactive Waste	Ft <sup>3</sup> /1,000 kWh						

With in-depth analysis, the environmental characteristics of any form of electric generation will reveal benefits as well as costs. For further information, contact Dayton Power & Light at [www.dpandl.com](http://www.dpandl.com) or by phone at 800-433-8500.

*DP&L's practice is to meet or exceed all environmental regulations.*

Regional Average Air Emission rates: sulfur dioxide-5.2 Lbs/MWh, nitrogen oxide-1.5 Lbs/MWh, carbon dioxide-1,635 Lbs/MWh



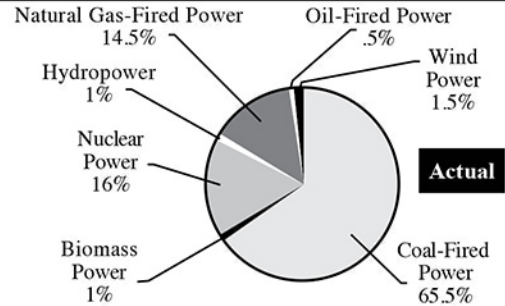
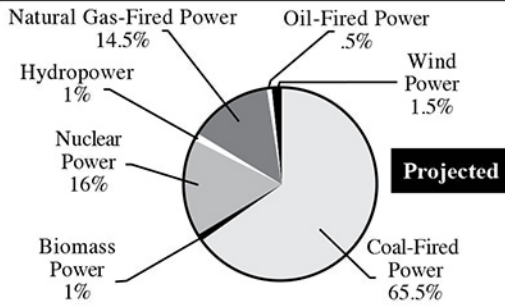
## Environmental Disclosure Information • Quarterly Comparisons

Dayton Power & Light • Projected Data for Calendar Year 2014

Actual Data for Period 01/01/14 to 06/30/14

### Generation Resource Mix–

A comparison between the sources of generation projected to be used to generate this product and the actual resources used during this period.



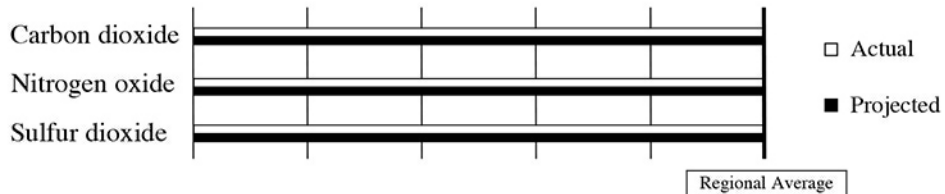
### Environmental Characteristics–

A description of the characteristics associated with each possible generation resource.

Biomass Power	Air Emissions and Solid Waste
Coal Power	Air Emissions and Solid Waste
Hydro Power	Wildlife Impacts
Natural Gas Power	Air Emissions and Solid Waste
Nuclear Power	Radioactive Waste
Oil Power	Air Emissions and Solid Waste
Other Sources	Unknown Impacts
Solar Power	No Significant Impacts
Unknown Purchased Resources	Unknown Impacts
Wind Power	Wildlife Impacts

### Air Emissions–

Product-specific projected and actual air emissions for this period compared to the regional average air emissions.



### Radioactive Waste–

Radioactive waste associated with the product.

Type:	Quantity:
High-Level Radioactive Waste	Lbs./1,000 kWh
Low-Level Radioactive Waste	Ft <sup>3</sup> /1,000 kWh

Note: The generation of this product involves the use of 0% of unknown purchased resources. The air emissions and radioactive waste associated with these unknown resources are not included in these charts.

With in-depth analysis, the environmental characteristics of any form of electric generation will reveal benefits as well as costs. For further information, contact Dayton Power & Light at [www.dpandl.com](http://www.dpandl.com) or by phone at 800-433-8500.

*DP&L's practice is to meet or exceed all environmental regulations.*

Regional Average Air Emission rates: sulfur dioxide-5.2 Lbs/MWh, nitrogen oxide-1.5 Lbs/MWh, carbon dioxide-1,635 Lbs/MWh

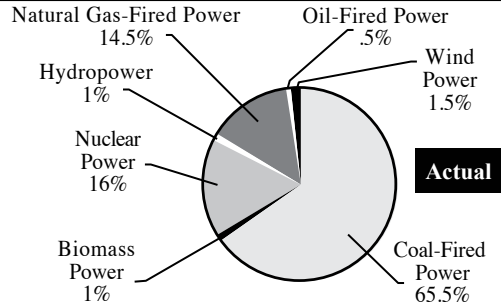
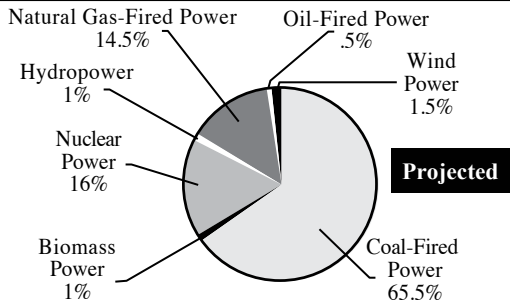
## Environmental Disclosure Information • Quarterly Comparisons

Dayton Power & Light • Projected Data for Calendar Year 2014

Actual Data for Period 01/01/14 to 09/30/14

### Generation Resource Mix–

A comparison between the sources of generation projected to be used to generate this product and the actual resources used during this period.



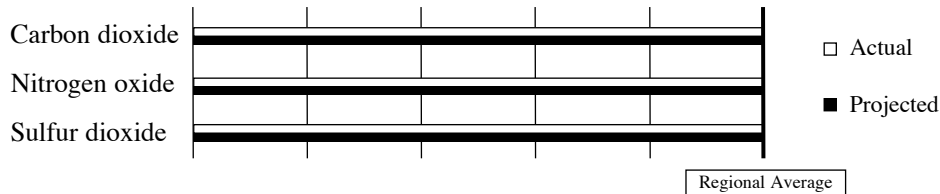
### Environmental Characteristics–

A description of the characteristics associated with each possible generation resource.

Biomass Power	Air Emissions and Solid Waste
Coal Power	Air Emissions and Solid Waste
Hydro Power	Wildlife Impacts
Natural Gas Power	Air Emissions and Solid Waste
Nuclear Power	Radioactive Waste
Oil Power	Air Emissions and Solid Waste
Other Sources	Unknown Impacts
Solar Power	No Significant Impacts
Unknown Purchased Resources	Unknown Impacts
Wind Power	Wildlife Impacts

### Air Emissions–

Product-specific projected and actual air emissions for this period compared to the regional average air emissions.



### Radioactive Waste–

Radioactive waste associated with the product.

Type:	Quantity:
High-Level Radioactive Waste	Lbs./1,000 kWh
Low-Level Radioactive Waste	Ft <sup>3</sup> /1,000 kWh

Note: The generation of this product involves the use of 0% of unknown purchased resources. The air emissions and radioactive waste associated with these unknown resources are not included in these charts.

With in-depth analysis, the environmental characteristics of any form of electric generation will reveal benefits as well as costs. For further information, contact Dayton Power & Light at [www.dpandl.com](http://www.dpandl.com) or by phone at 800-433-8500.

*DP&L's practice is to meet or exceed all environmental regulations.*

Regional Average Air Emission rates: sulfur dioxide-5.2 Lbs/MWh, nitrogen oxide-1.5 Lbs/MWh, carbon dioxide-1,635 Lbs/MWh